

RESOLUTION NO. 949

A RESOLUTION OF THE CITY OF GIG HARBOR, WASHINGTON, ADOPTING THE PARKS COMMISSION NOTICE OF RECOMMENDATION REGARDING FUTURE USES OF THE ANCICH WATERFRONT PARK.

WHEREAS, on February 25, 2013, the City Council authorized the Parks Commission to conduct a public visioning process for the Ancich Waterfront Park; and

WHEREAS, the intent of the process was to develop a shared vision for the future use of the property; and

WHEREAS, the Parks Commission, Public Works Department and Planning Department worked together as a joint effort; and

WHEREAS, a Stakeholders committee was established in March, 2013, that comprised of approximately 20 local residents, citizens, business owners, recreationalists and nearby property owners; and

WHEREAS, during the first Stakeholders meeting on April 17th, 2013 they identified community needs not currently being met or sufficient along the waterfront of Gig Harbor; and

WHEREAS, during the second meeting on April 24th, 2013 the stakeholders focused on implementing and submitting a collaborative approach to the development of the future park due to the site location and community needs; and

WHEREAS, on May 22, 2013 the Stakeholders in conjunction with the Parks Commission held a well-attended Open House on their findings; and

WHEREAS, during a joint meeting on July 15, 2013 the Parks Commission presented City Council with initial recommendations for the site to preserve the existing structures and begin restoration of the netshed; and

WHEREAS, the Parks Commission met on August 7, 2013, September 4, 2013, and October 2, 2013 regarding the topic; and

WHEREAS, the Parks Commission held an Open House and Public Hearing on November 6th, 2013 and made a motion to forward their recommendation to City Council for final consideration; and

WHEREAS, on December 9th, 2013, the City Council held a public hearing and considered the Parks Commission recommendation for Ancich Waterfront Park attached hereto as Exhibit A; now, therefore,

THE CITY COUNCIL OF THE CITY OF GIG HARBOR, WASHINGTON, HEREBY RESOLVES AS FOLLOWS:

Section 1. Ancich Waterfront Park Uses – Adopted. The Gig Harbor City Council hereby adopts the Parks Commission recommendation on uses appropriate for Ancich Waterfront Park as drafted and attached as Exhibit A and incorporated herein by reference.

PASSED by the City Council this 9th day of December, 2013.

APPROVED:


Charles L. Hunter, Mayor

ATTEST/AUTHENTICATED:


Molly Towslee, City Clerk

APPROVED AS TO FORM:
Office of the City Attorney


Angela Summerfield, City Attorney

FILED WITH THE CITY CLERK: 12/02/13
PASSED BY THE CITY COUNCIL: 12/09/13
RESOLUTION NO: 949



DEVELOPMENT SERVICES

NOTICE OF RECOMMENDATION

CITY OF GIG HARBOR PARKS COMMISSION

TO: Mayor Hunter and Members of the Council
FROM: Rahna Lovrovich, Chair, Parks Commission
RE: **Ancich Waterfront Park – Recommendation**

Council Directive:

On February 25, 2013, the City Council authorized the Parks Commission to conduct a public visioning process for the Ancich Waterfront Park as outlined in a memo from the Mayor. The intent of the process was to develop a shared vision for the use of the property. This was a joint effort of the Parks Commission, Public Works department and Planning Department with Lindsey Sehmel, Senior Planner, as the Commission's primary liaison.

Stakeholders Participation:

A group of approximately 20 local residents, citizens, business owners, recreationalists, and property owners participated in the visioning process through the months of April and May 2013. The first workshop occurred on April 17th, 2013 and had a focus on goal setting for the site. The stakeholders identified community needs not currently met or sufficient along the waterfront, a summary of these findings can be found in the attached packet. The focus of the second meeting on April 24th was on implementation and submitting a collaborative use approach to the Parks Commission for their consideration. The final recommendations from the stakeholders focus on primary uses to be water dependent with commercial fishing and human powered craft in addition to retention and redevelopment of the existing structures on the site. In no particular order, the stakeholders found that the top priorities of the site are:

- Uses of the site to be shared among the community – collaborative and compatible;
- Preserve and strengthen the view from both landward and waterward;
- Historic preservation of Netshed and recognition of historic features of site;
- Provide dock access and moorage facilities for both commercial fisherman and small/personal craft and that the two should not share the same float system;
- Provide storage opportunities on site and access and maneuverability to and from the storage facility; and
- Provide direct access to the shore.

Parking was not found to be a priority or need of the site. It was noted that if parking is required, it shall be provided underground and fully screened from the water and public right of way.

These findings were presented at a broadly noticed public open house on May 22, 2013.

Parks Commission Review:

The Parks Commission held work-study sessions at their regularly scheduled meetings from March 2013 through November 2013, meeting minutes are attached.

The Commission hosted a second open house prior to the public hearing on November 6th. Public notice for the open house and public hearing was provided in the Gateway, posted on the property, and on the City's webpage. There was substantial testimony supporting the Parks Commission approach for shared use at the site from a broad range of community members. After deliberation, at the public hearing session, the Parks Commission recommended that the below findings be forwarded to City Council for final consideration.

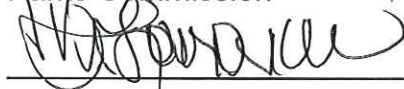
Findings of Fact:

The Parks Commission makes the following findings in relation to their recommendation to the uses on Ancich Waterfront Park, as supported by the Working Waterfront designation of the Shoreline Master Program.

These recommendations are all of high priority. Additional uses or proposals beyond the scope of these recommendations should be vetted with the broader community involved with the process prior to any implementation:

1. Allow the commercial fishing fleet to have singular use of the Ancich netshed, utilizing the opportunity for viewing of net work and educational uses. The netshed is not intended to be used for overnight storage.
2. Build a dock/float system aligned with the netshed for the Commercial fleet, supporting the historic context of the site.
3. Allow use of the commercial dock/float system for transient moorage during summer fishing season.
4. Establish public storage/locker facilities onsite for storage and easy access to and from the water for human powered craft.
5. Adjacent to the southern portion of the lot, build a low profile dock/float system for access to and from the water for small craft users.

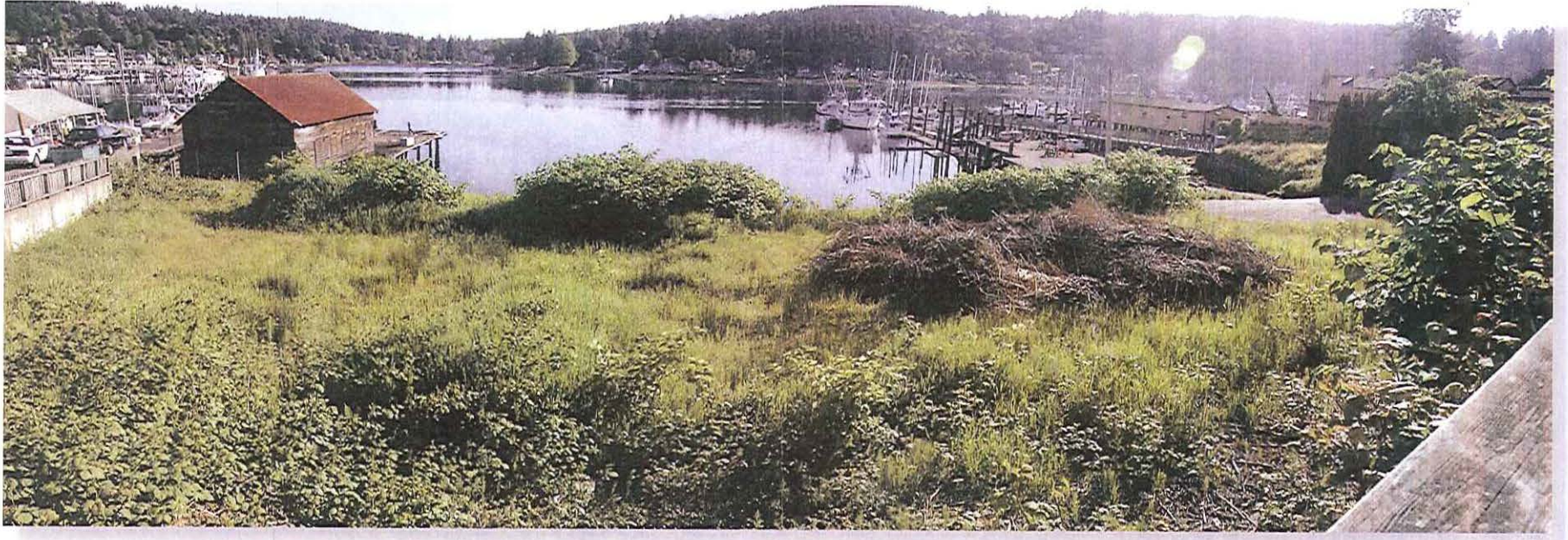
Rahna Lovrovich, Chair
Parks Commission



Date 11/25/2013

Parks Commission FINDINGS

UPLAND VIEW



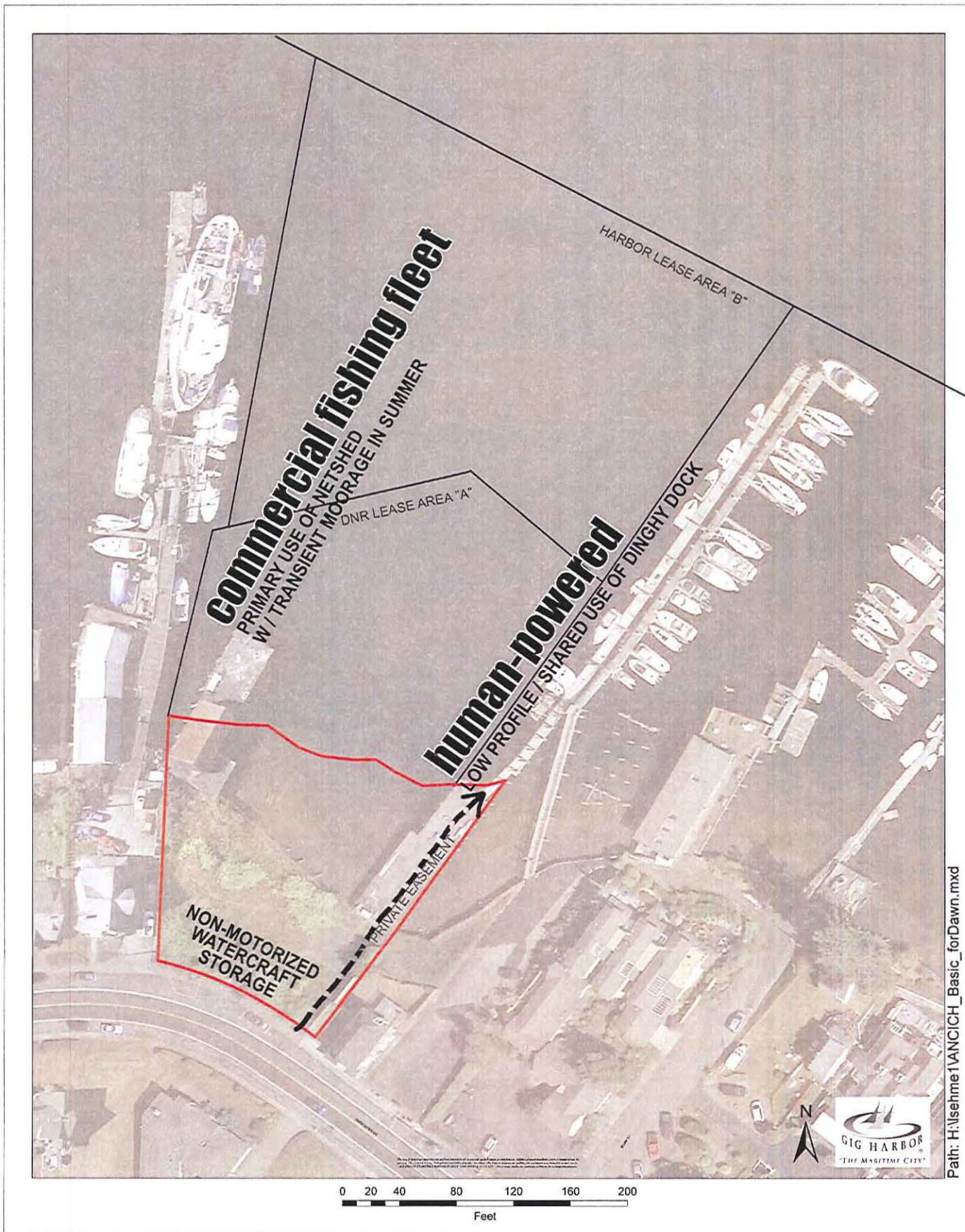
WATER VIEW



List of City-Wide Park Use Priorities the Parks Commission found not appropriate for Ancich Park

Ancich Waterfront Park Parks Commission Use/Priority Worksheet of August 7, 2013				
Stakeholder identified UNDERMET NEEDS	Community-wide priority of UNDERMET NEEDS (1=high 2=moderate 3=low)	NEED proposed for Ancich Site?		Comments
		Yes	No	
Barefoot Access to shore	3		X	Already available at several parks, not a necessity.
Boating Destination	2		X	Size constraints on Ancich site, city needs to provide more necessities to be able to be considered a boating destination such as fuel dock, grocery store, and public showers.
Citizen access to water/tidelands	3		X	Already available at several parks, not a necessity.
Environmental Desitination	2		X	No structure but use allowed and supported.
Fuel Dock	1		X	Not at Ancich due to geography constraints and impacts to the residential neighborhood.
Kayak team home base	3		X	Allow use of Ancich site for team but not appropriate for a large structure/development.
Moorage bouys	3		X	Commission states that the bay is too small for moorage bouys and that they are not an appropriate form of use within the Harbor due to the amount to boat traffic. They are not recommended to be placed anywhere.

Parks Commission FINDINGS



List of Priorities for Ancich Park

Ancich Waterfront Park Parks Commission Use/Priority Worksheet of August 7, 2013		
Stakeholder identified UNDERMET NEEDS	Community-wide priority of UNDERMET NEEDS (1=high 2=moderate 3=low)	Comments
Active netshed for commercial fishing	1	Utilize opportunity for viewing of net work, educational use, supportive of historic working waterfront. Use for work and unload only, not storage.
Boaters access to land	2.5	Secondary to primary moorage, not an exclusive use. Consider proposing time limits for moorage similar to Eddon Boat.
Commercial fishing fleet moorage	1	Yes, very high priority for Ancich site due to working waterfront designation. Align with the netshed. Support the historic context and economy.
Dingy moorage	2	Similar to what is available at Jerisch.
Income producing use	3	For lease process, require leasors of space to rent at market rate cost to cover O&M of facilities.
Human powered craft storage/lockers	1	For general public use with potential to lease a portion of the structure to Kayak Team.
Low profile dock	1.5	City has two already at Eddon and Jerisch. However, this is also an appropriate use for Ancich.
Preservation of Netshed	1	Historical preservation of Ancich netshed is a high priority, and has previously been forwarded to the City Council for initial phasing to preserve and restore it.
Public Dock	2	The Commission recognizes the need for additional seasonal (summer) moorage that could cooperate with the fishing fleet being out of town. There is no proposal for a primary use of a transit moorage dock, and such as use would not be appropriate for Ancich.
Recognition of historic working waterfront	1	Yes, very high priority for Ancich site.